

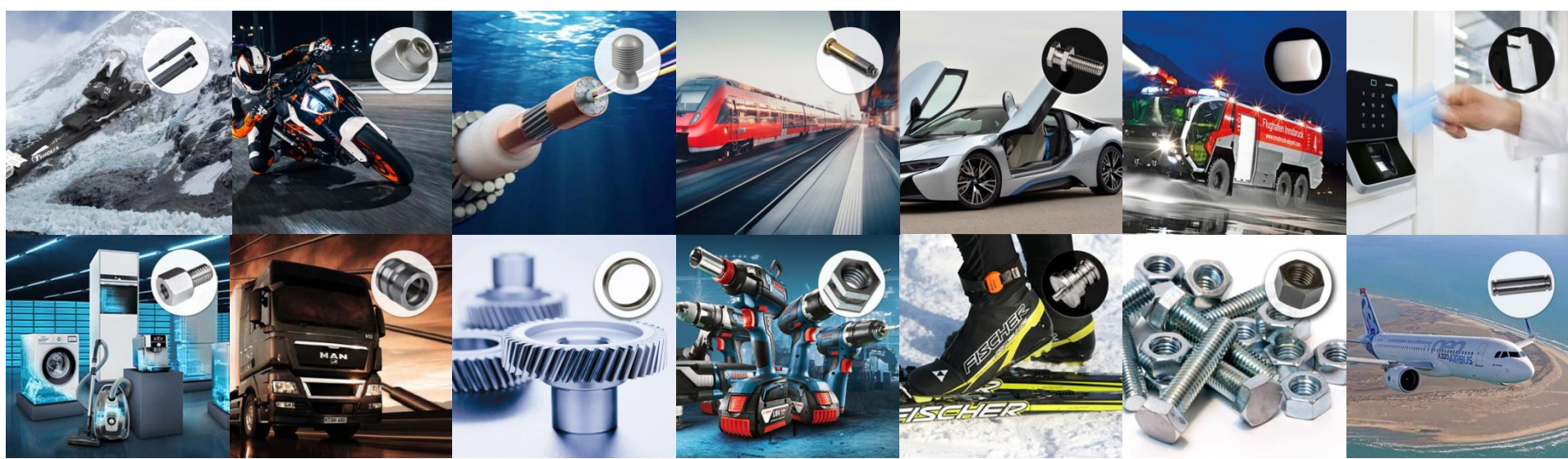


ABW

**TURNED PARTS
IN PERFECTION.**



ABW

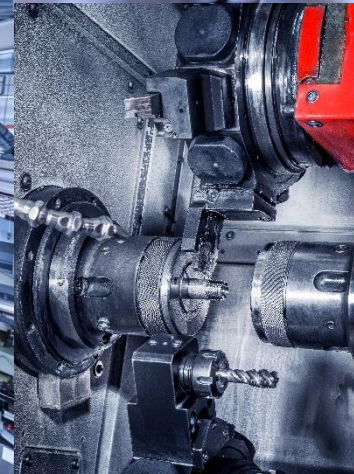
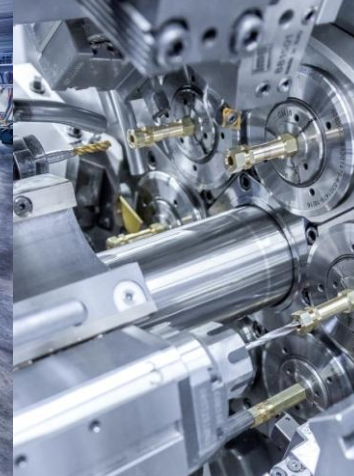


OFTEN INVISIBLE, BUT ALWAYS **INDISPENSABLE.**
HIGH-PRECISION TURNED PARTS FROM ABW.

- References: voestalpine, KTM, Bosch, Fischer Sports, Magna, MAN, Siemens, ...
- 60 millions of turned parts/year
- 1.400 tons of material/year
- over 500 customers
- 60 employees
- worldwide export

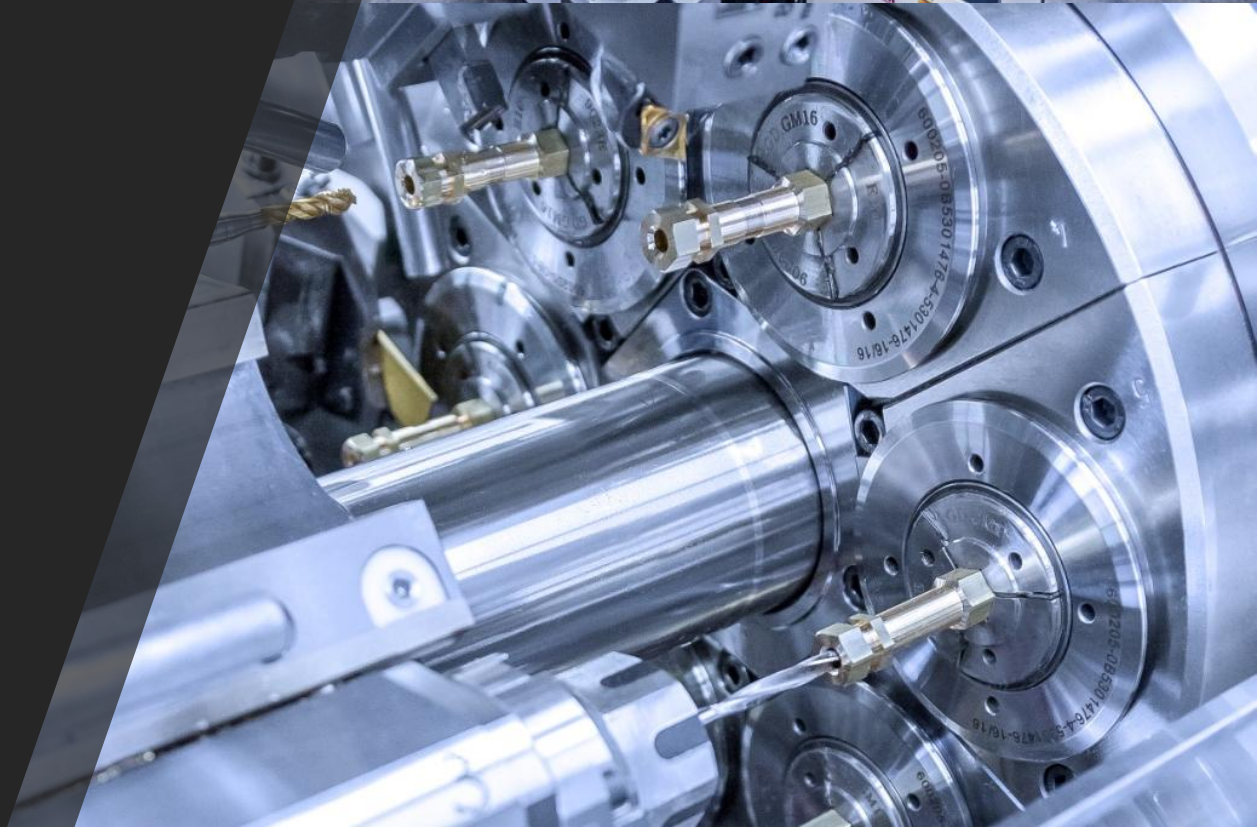
REDUCE COSTS– INCREASE EFFICIENCY.

- 100 automatic lathes
- Curve lathes
- CNC technology
- Efficiency from combination:
curve turning machines and
automation
- 12 hours/day
- 5-6 days/week
- One of the largest turned parts
manufacturers in Austria



CAM MACHINE **SIX-SPINDLE MACHINE** >20 PCS.

- Speed machines – high clock frequency up to 1,800 pcs./h
- 6 material rods processed simultaneously
- minimum production quantity: 10,000 pieces



CAM MACHINE **SINGLE SPINDLE** >35 PCS.

- Economical – high frequency and low machine costs
- Minimum production quantity: 2,000 pieces



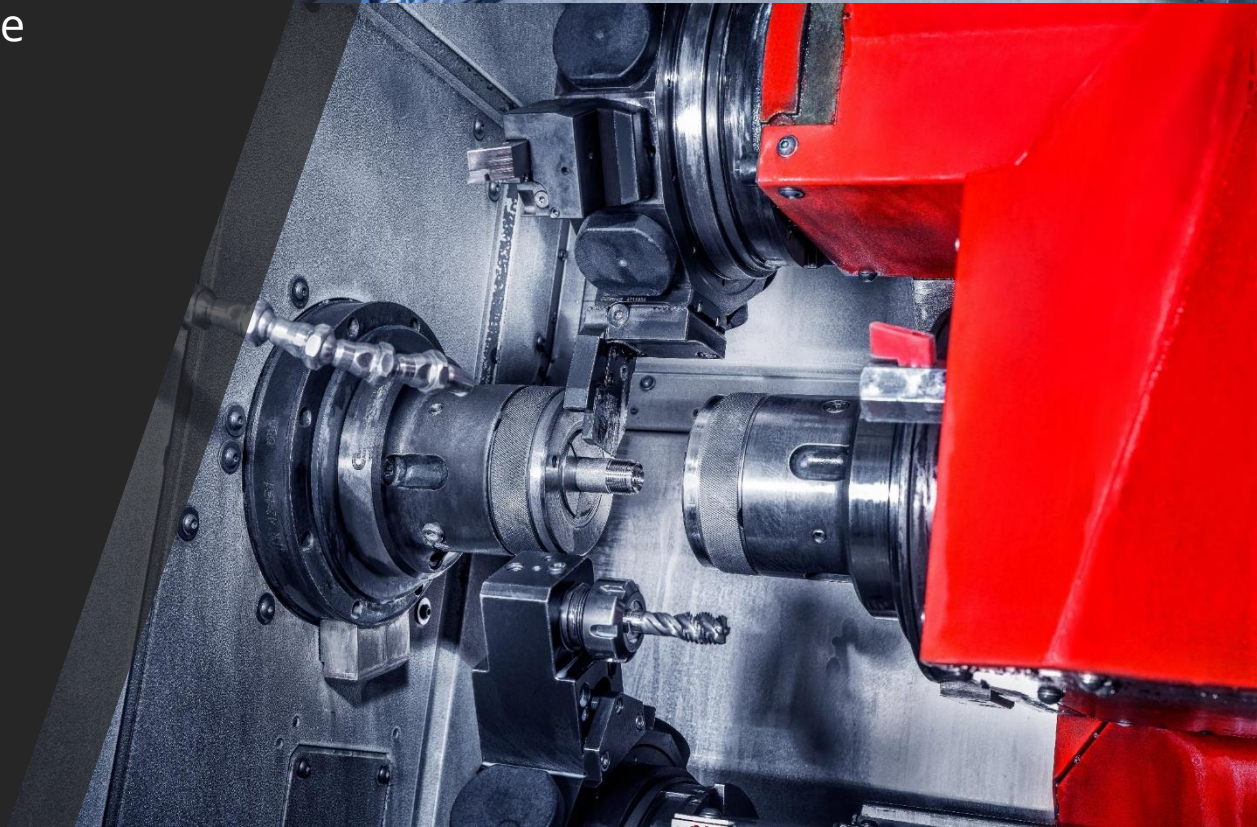
CNC CITIZEN SHORT- AND LONG- LATHE MACHINE >25 PCS.

- Long turned parts with 2 to 32 mm diameter
- Turned parts up to 1,000 mm in length
- High quality special turned parts
- Minimum production quantity: 500 pieces



CNC EMCO SHORT LATHE MACHINE 9 PCS.

- High-quality CNC turned parts with low tolerance ranges
- minimum production quantity:
500 pieces



AUTOMATION

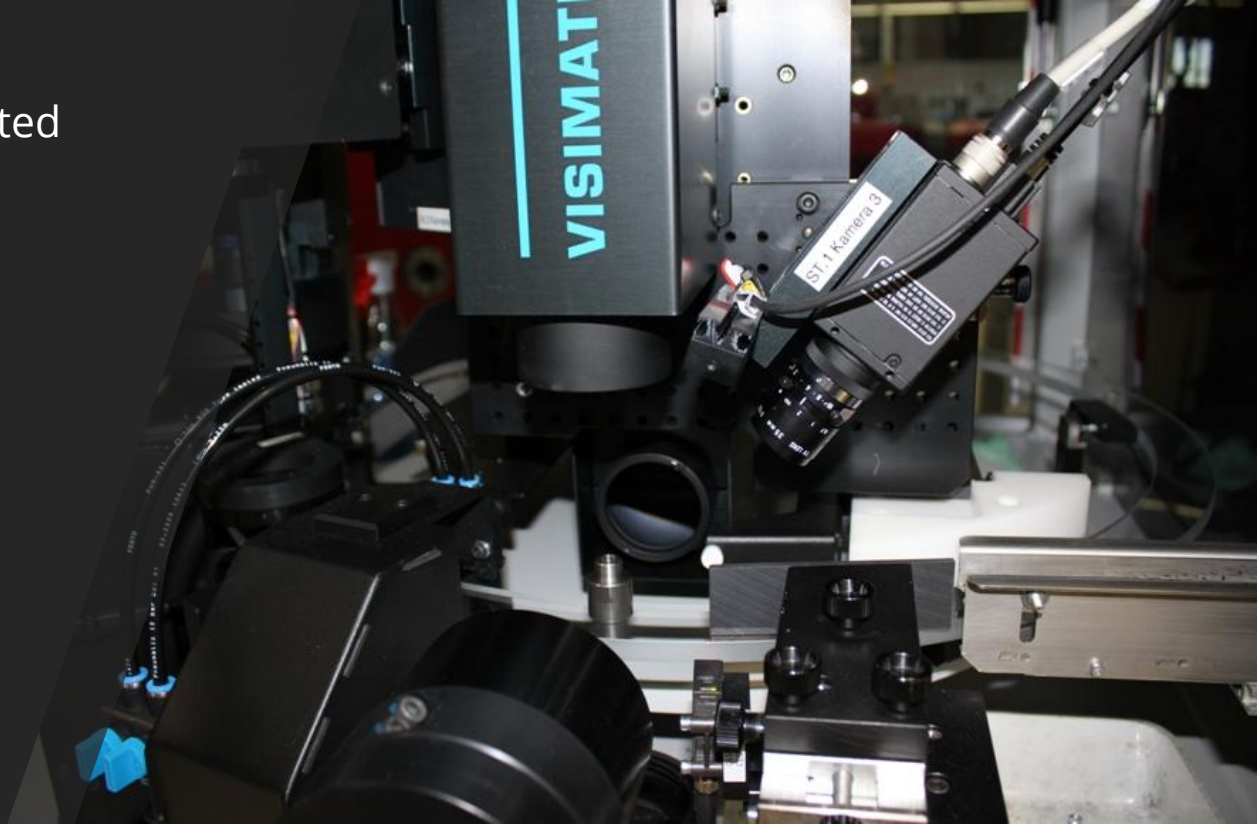
>20 PCS.

- Automation by own employees
- Low personnel costs
> cost reduction
- Combination with cam machines
> significant increase in efficiency
- Minimum production quantity:
10,000 pieces



OPTICAL CHECKING MACHINES 6 PCS.

- Optical and fully automatic inspection of all turned parts
- On the basis of transmitted light and incident light cameras
- Test quantities up to 5 pcs/sec
- Tolerance range of 0.001 mm



PRECISION TO 100 PERCENT.

- Over 2,000 measuring devices
- Optical & fully automatic testing possible
- Annual re-certification to ISO 9001 and ISO 14001

ZERTIFIKAT

Die Zertifizierungsstelle
der TÜV SÜD Landesgesellschaft Österreich GmbH

bescheinigt, dass die Organisation

ABW

AUTOMATENDREHEREI BRÜDER WIESER Ges.m.b.H.

Gewerbestrasse 2
A-4882 Oberwang

für den Geltungsbereich

Herstellung von Drehteilen

ein Managementsystem
eingeführt hat und anwendet.

Durch ein Audit wurde der Nachweis erbracht, dass die Forderungen der

ISO 9001:2015 und ISO 14001:2015

erfüllt sind.

Dieses Zertifikat ist gültig von 1. Oktober 2023 bis **30. September 2026**.

Zertifikat-Registrier-Nr. **QU1530171**

A. Kasper

Wien, 2023-07-28

TURNED PARTS IN PERFECTION

- Founded in 1970
- Turnover 2025: € 16.0 million
Turnover 2024: € 12.6 million
Turnover 2023: € 15.3 million
- Expansion possibility with
15,000 m² expansion area

